

Quick Start Guide HomeFill® Oxygen System



REACTHEALTH
Oxygen

Patient Set Up In the Home

Start with a running concentrator that has reached >90% oxygen purity, as required by the HomeFill compressor. Set the prescribed flow rate to the patient.

Step 1 Connect the power cord (part #1112949) to the compressor.

Step 2 Plug in the power cord.

Step 3 Connect the fill tubing (part #1105177) to the compressor.

Step 4 Connect the fill tubing to the concentrator.

Step 5 Push down and hold the coupler sleeve.

Step 6 Connect the cylinder to the coupler.
Note: If the cylinder pressure is greater than 1500 psig, by pulling up on the coupler sleeve while pushing down on the cylinder. DO NOT attempt to top off the cylinder. It may not fill.

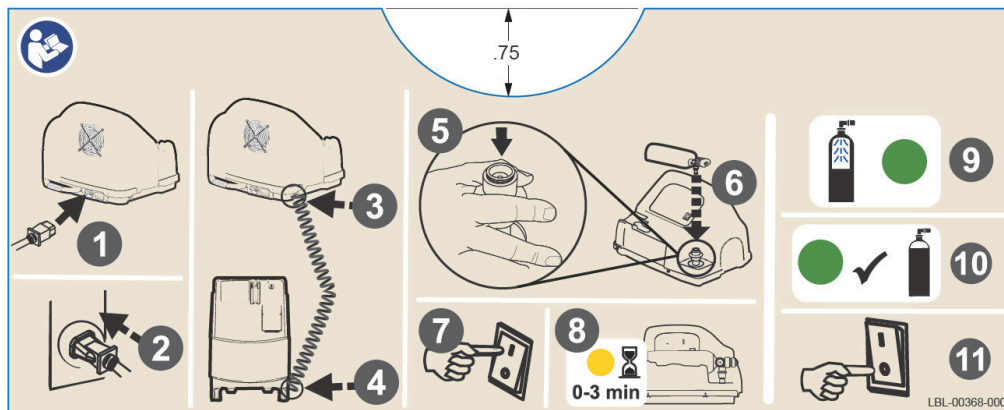
Step 7 Turn ON the compressor.

Step 8 Wait 0-3 minutes for the compressor to start up. The yellow light will come on.

Step 9 Wait as the cylinder fills. The green (filling) light will come on.

Step 10 When the cylinder is full, a green (full) light will come on.

Step 11 Turn the compressor OFF.



This instruction label is applied to all Ventec/React Health manufactured HomeFill compressors. *The Quick Start label is for reference ONLY. It is imperative to read the manual in its ENTIRETY for full instructions.

HomeFill Compressor Function Test

Perform at Provider Location

Step 1 Set test concentrator to 3 L/min. and verify oxygen concentration > 90%.

Step 2 Plug in the HomeFill compressor.

Step 3 Connect the concentrator to the compressor.

Step 4 Connect an empty HomeFill cylinder to the cylinder fillport.

Step 5 Turn the compressor on and observe for the following:

- ✦ The Wait (YELLOW) light comes on for 3 minutes.
 - ✦ After 3 minutes, the Fill (GREEN) light will come on when the O₂ from the concentrator is >90%.
 - ✦ The compressor begins to fill the cylinder.
 - ✦ Disconnect the concentrator oxygen supply line and observe that the “O₂ below Normal” (YELLOW) light comes on.
 - ✦ Reconnect the concentrator supply line and observe that Fill (GREEN) light comes on and the cylinder begins to fill.
 - ✦ Fill cylinder completely. Verify fill time accuracy for cylinder size according to chart below.
-

Fill Times

	Normal	Maximum
HF2PC9	2 hr 20 min*	2 hr 45 min
HF2POST9	2 hr 20 min*	2 hr 45 min
HF2POSTD	3 hr 20 min*	3 hr 50 min

*with flow to patient

Preventative Maintenance

HomeFill Compressor

As needed: Clean the cabinet with a mild household cleaner and a non-abrasive cloth or sponge. NOTE: Take care to prevent debris or liquids from entering the tank coupler.

Weekly: Clean the Compressor Filter

Step 1 Unplug the compressor. Grasp the plug, not the cord.

Step 2 Remove the filter (part #2000489).

Step 3 Clean the filter with a vacuum cleaner, or wash in warm, soapy water and rinse thoroughly.

Step 4 Dry the filter thoroughly before reinstallation.

HomeFill Cylinder Function Test

Perform at Provider Location

Step 1 Make sure the cylinder fill port properly connects to the HomeFill II filling unit.

Step 2 Partially fill the cylinder to check for proper filling operation (15 min).

Step 3 Verify movement on gauge.

Step 4 Check the cylinder for leaks.

Step 5 Test the flow of the regulator at continuous flow. It should read 2 L/min.

Step 6 Connect an oxygen cannula to the conserving device at each setting.

Step 7 Breathe with the cannula to see if it pulses.

Step 8 Bleed the cylinder down until empty (use 2 L/min. continuous flow setting on conserver). If it does not pulse, discontinue use.

Step 9 Verify gauge is at 0 psi when cylinder is empty.

Preventative Maintenance

HomeFill Cylinder

As needed: Clean the cylinder and conserver (if applicable)

Step 1 Ensure the cover is installed on the fillport.

Step 2 Clean exterior surfaces of the cylinder with a lint free cloth dampened with 70% isopropyl alcohol.

Step 3 Clean the exterior surfaces of the conserver with a dry, lint free cloth.

Step 4 If the conserver is still visibly soiled, clean with a lint free cloth dampened with 70% isopropyl alcohol. DO NOT wipe the fillport or outlet fitting.

Step 5 Wipe the cylinder and conserver with a dry lint free cloth. Ensure the product is dry before using.

✧ **Every 5 years:** Conserver should be inspected and tested.

✧ **Every 5 years:** Cylinder must undergo hydrostatic testing.

System Troubleshooting

If there is a Yellow light:

Step 1 Check the connector tubing for breaks, blockages or damage.

Step 2 Check the cylinder connection.

Step 3 Check the concentrator flow rate. The concentrator flow rate must be less than 3 L/min for 5 L concentrators and 5 L/min for 10 L concentrators.

Other Helpful Information

The HomeFill compressor contains an O₂ sensor to ensure >90% oxygen goes into the cylinder. The coiled tubing helps prevent connector breakage.

HomeFill cylinders are virtually silent.

Recommended patient set up is one HomeFill compressor and 2 cylinders. Patients can breathe from the concentrator while filling a cylinder.

Oxygen Concentrator	Maximum Output Flow for Patient Use
Perfecto2™ 5L models	3 L/min
Platinum® 5L models	3 L/min
Platinum® 10L models	5 L/min

Non-Ventec/React Health/Invacare concentrators may require lower output flow rates to the patient in order to provide $\geq 90\%$ oxygen levels to the HomeFill compressor.

Approved Concentrator and Ready Rack Model Information

The HomeFill Ready Rack is sold separately and is used to position the HomeFill compressor on top of an oxygen concentrator

Concentrator	Ready Rack Product ID
Perfecto2™, Perfecto2™ V	IOH270
Platinum® 5NXG	IOH280
Platinum® 10	IOH260

ReactHealth.com

Caution: U.S. Federal law restricts this device to sale by or on the order of a physician. Technical specifications may change.
MKT-00131, Rev A

* This Quick Start Guide is intended to provide a high-level overview of the HomeFill Oxygen System made up of the HomeFill Compressor and HomeFill Cylinders. It does not contain all the information required to operate the HomeFill System safely. For detailed instructions for use, see the User Manuals available online at reacthealth.com.